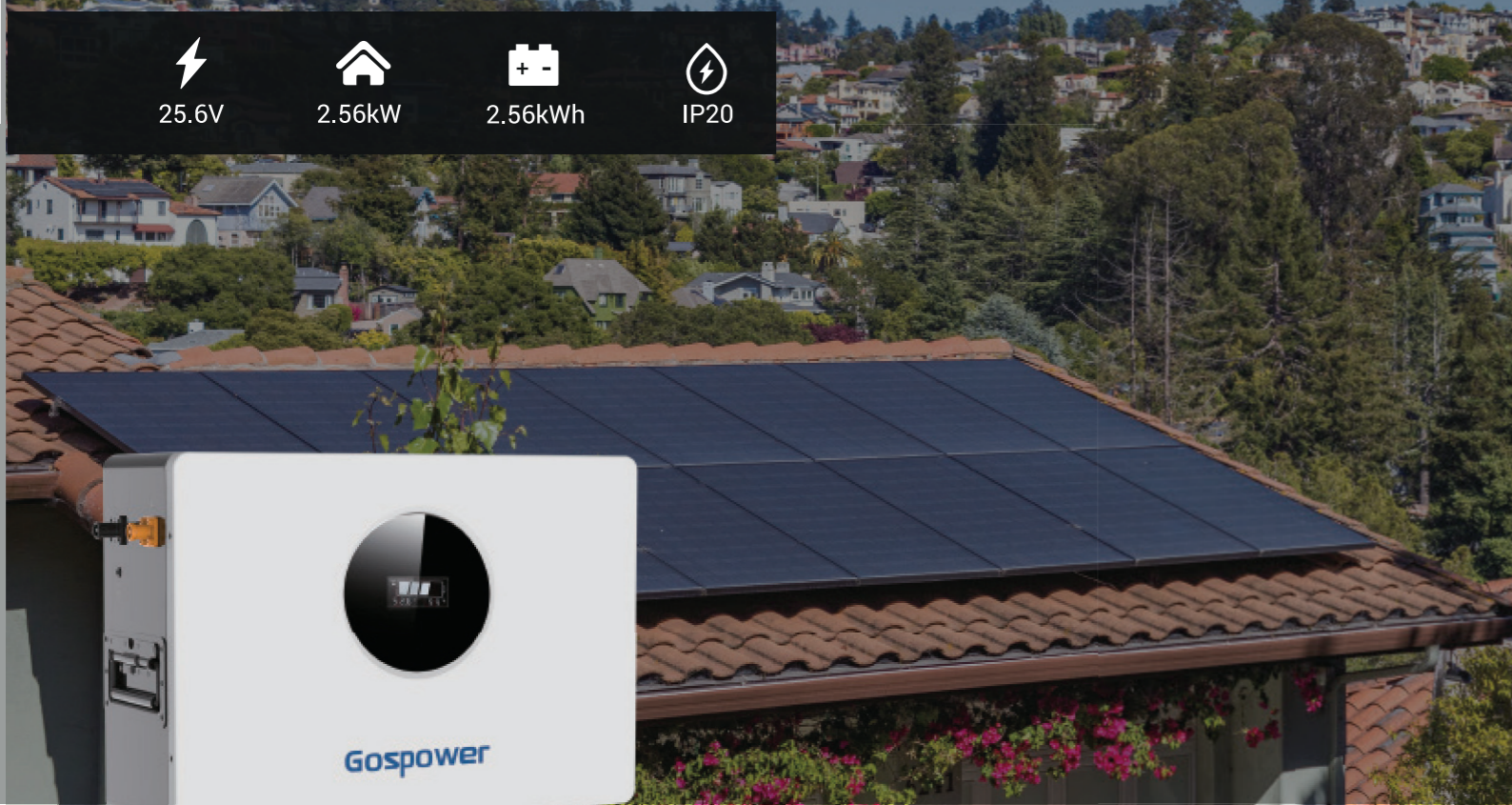
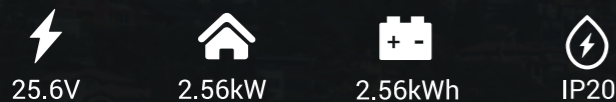


# 25.6V 100Ah LV Battery GPLB-24100M



- Grade-A LFP cells with a cycle Life of 4000+
- Compatible with mainstream inverter, offering strong adaptability
- Scalable up to 40.96kWh with 16 strings in parallel
- Plug-and-play wiring, easy installation
- IP20 rating plus 5 years warranty
- Smart BMS system to optimize performance
- Supports remote control and upgrades

## » Specifications

GPLB-24100M	
Nominal Energy (kWh)	2.56
Nominal Voltage (V)	25.6
Nominal Capacity (Ah)	100
IP Rating	IP 20
Output Power (kW)	2.56
Voltage Range (V)	21.6~29.2
Charge Voltage (V)	28.4~29.2
Charge Current (A)	75
Discharge Current (A)	100
Charge Mode	CC-CV
Communication	CAN/ RS485/ RS232/ Dry Contact
Charge Temperature	0 - 50 °C
Discharge Temperature	-20°C~55°C
Warranty	5 Years
Cycle Life	> 4000 (@25°C , 80% DOD)
Weight (kg)	27.7

